
SITUAZIONE GEOPOLITICA

**INTERVENTO DI
APERTURA**

**Carlo Altomonte
(U. Bocconi)**

Rischi globali: margine estensivo vs. intensivo

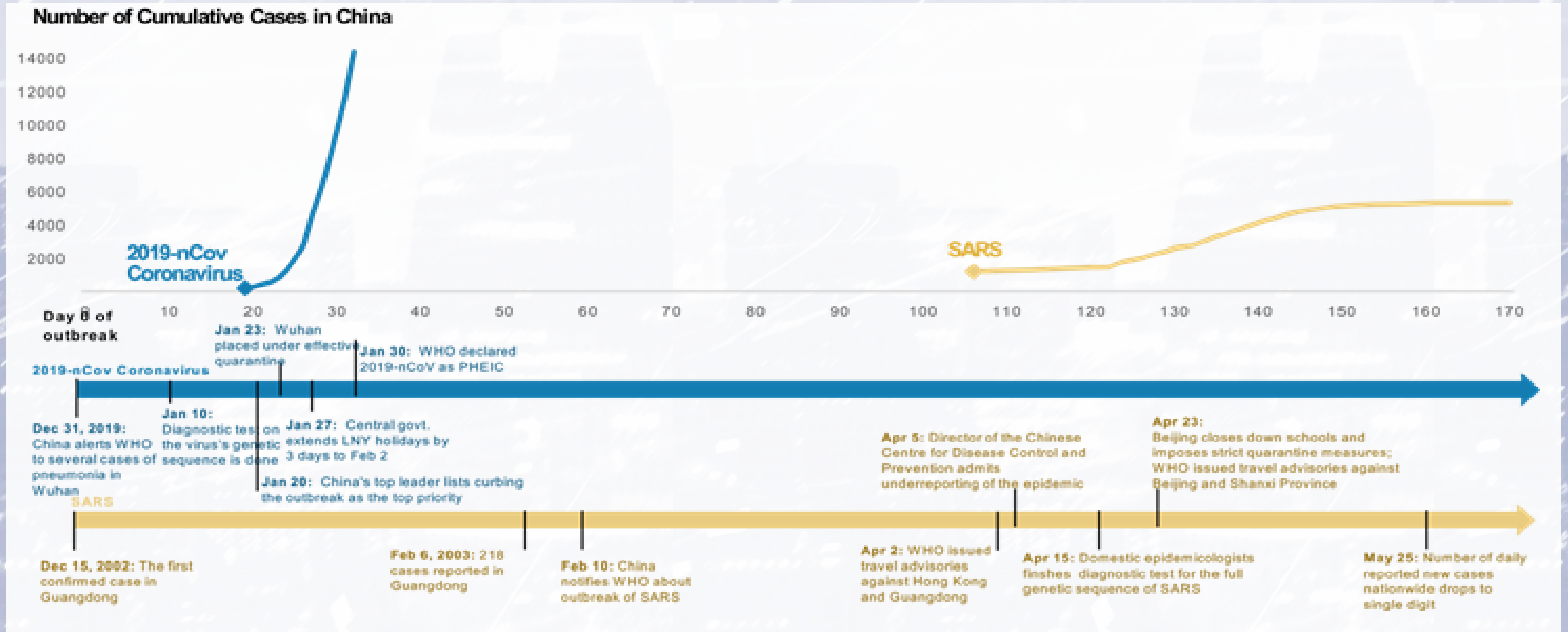
➤ Margine estensivo:

- Lo stesso rischio ha oggi effetti più ampi sul sistema produttivo globale

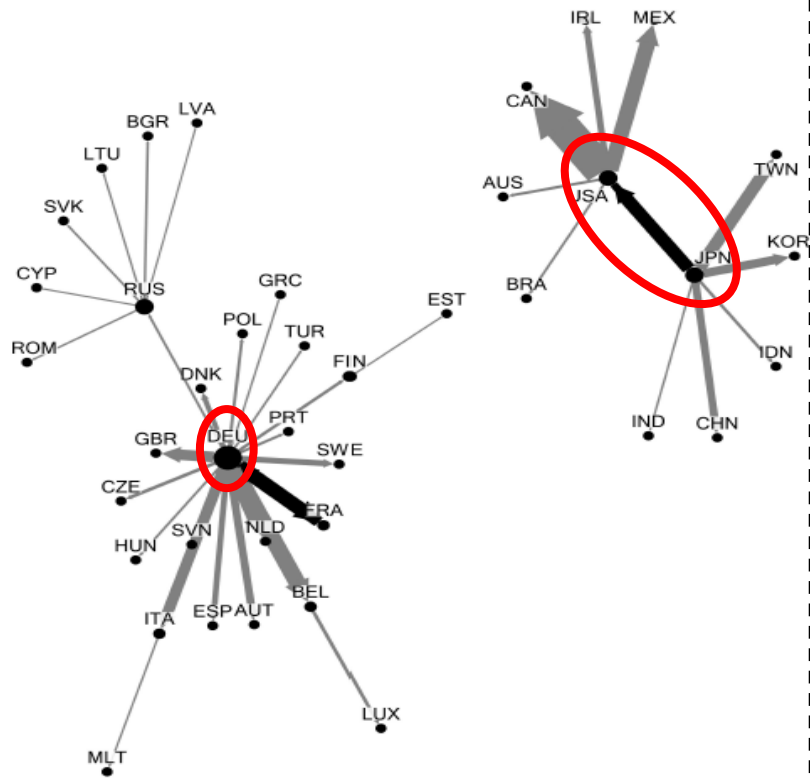
➤ Margine intensivo:

- A parità di sistema produttivo globale, i rischi sono oggi aumentati

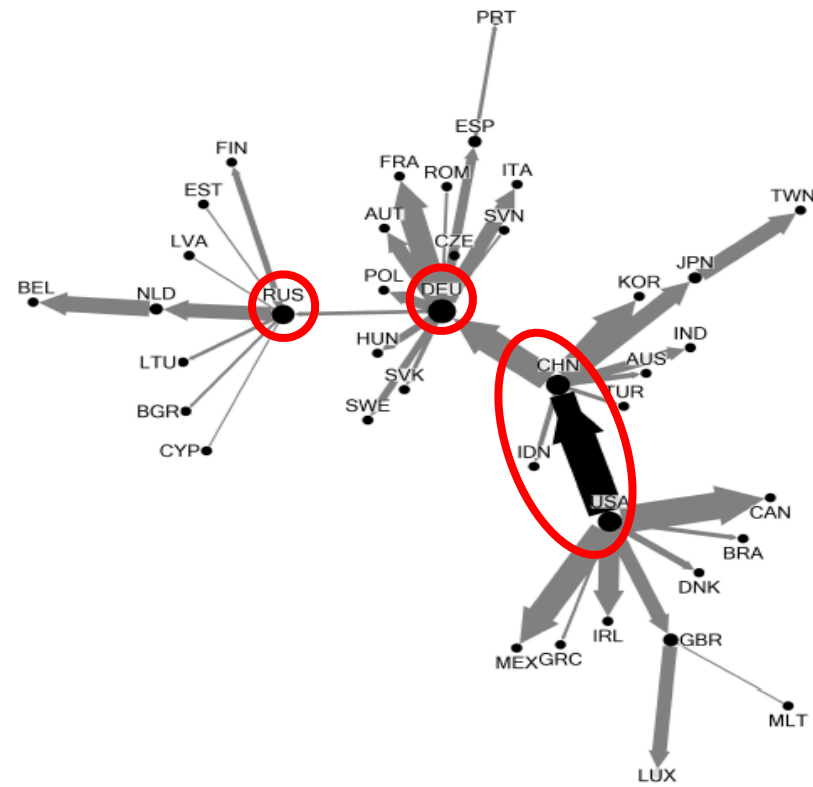
Margine estensivo



Margine estensivo

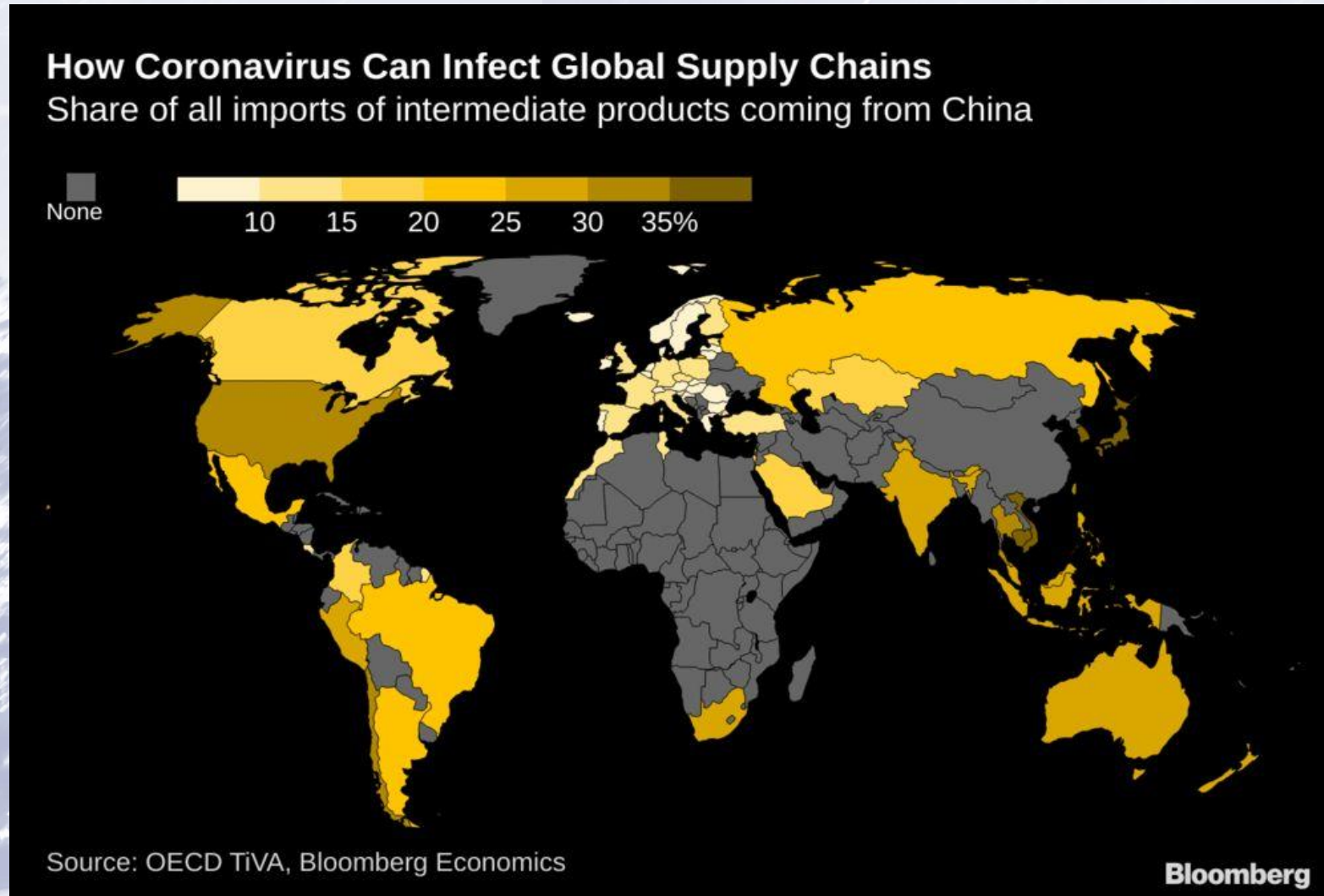


Value chains at the time of SARs

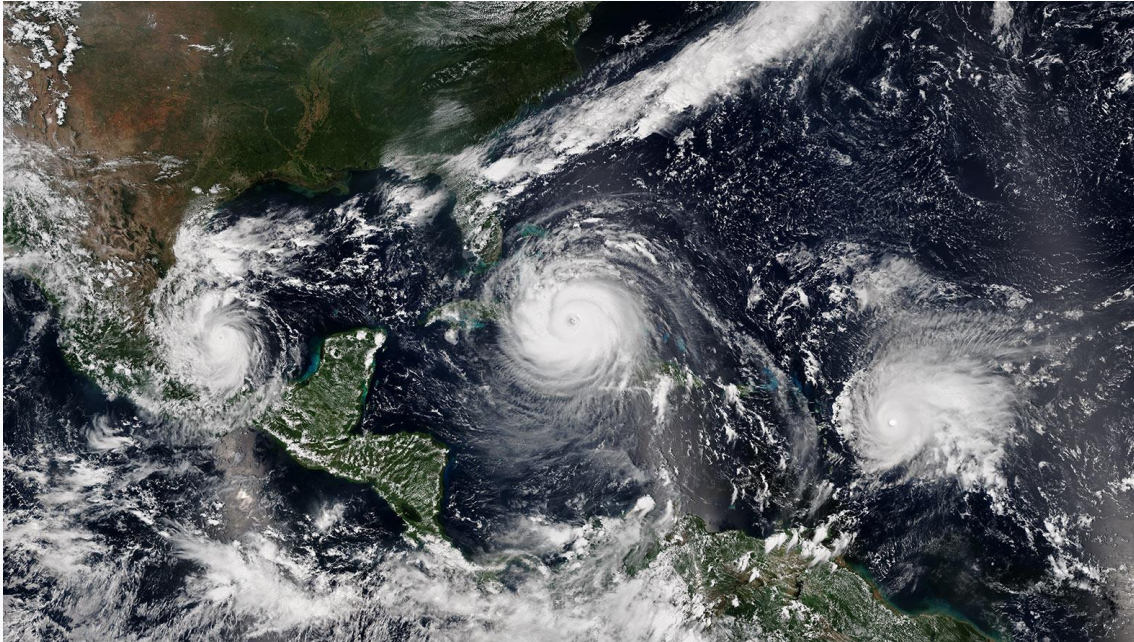


Value chains today

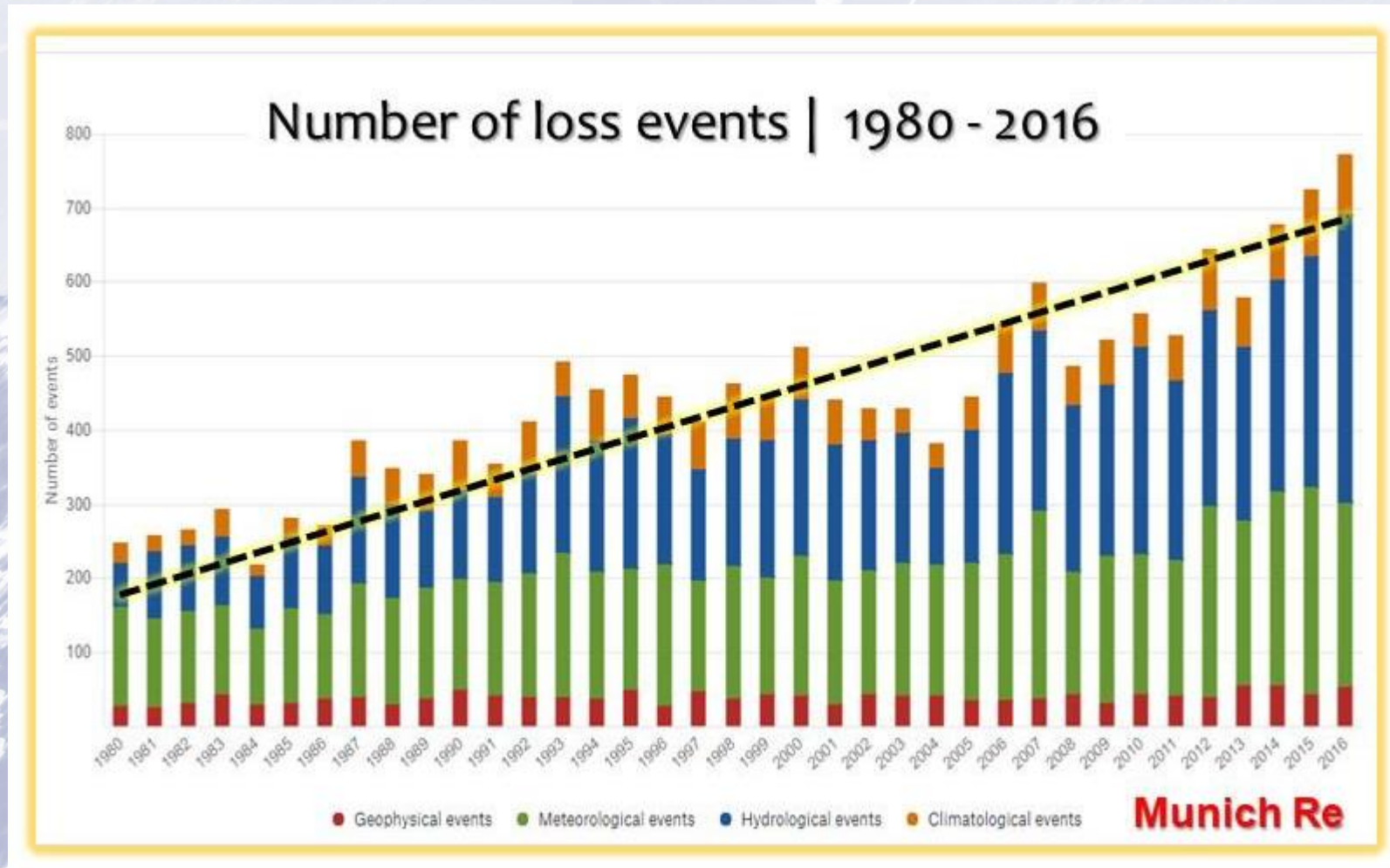
Margine estensivo



■ Margine intensivo: EWE



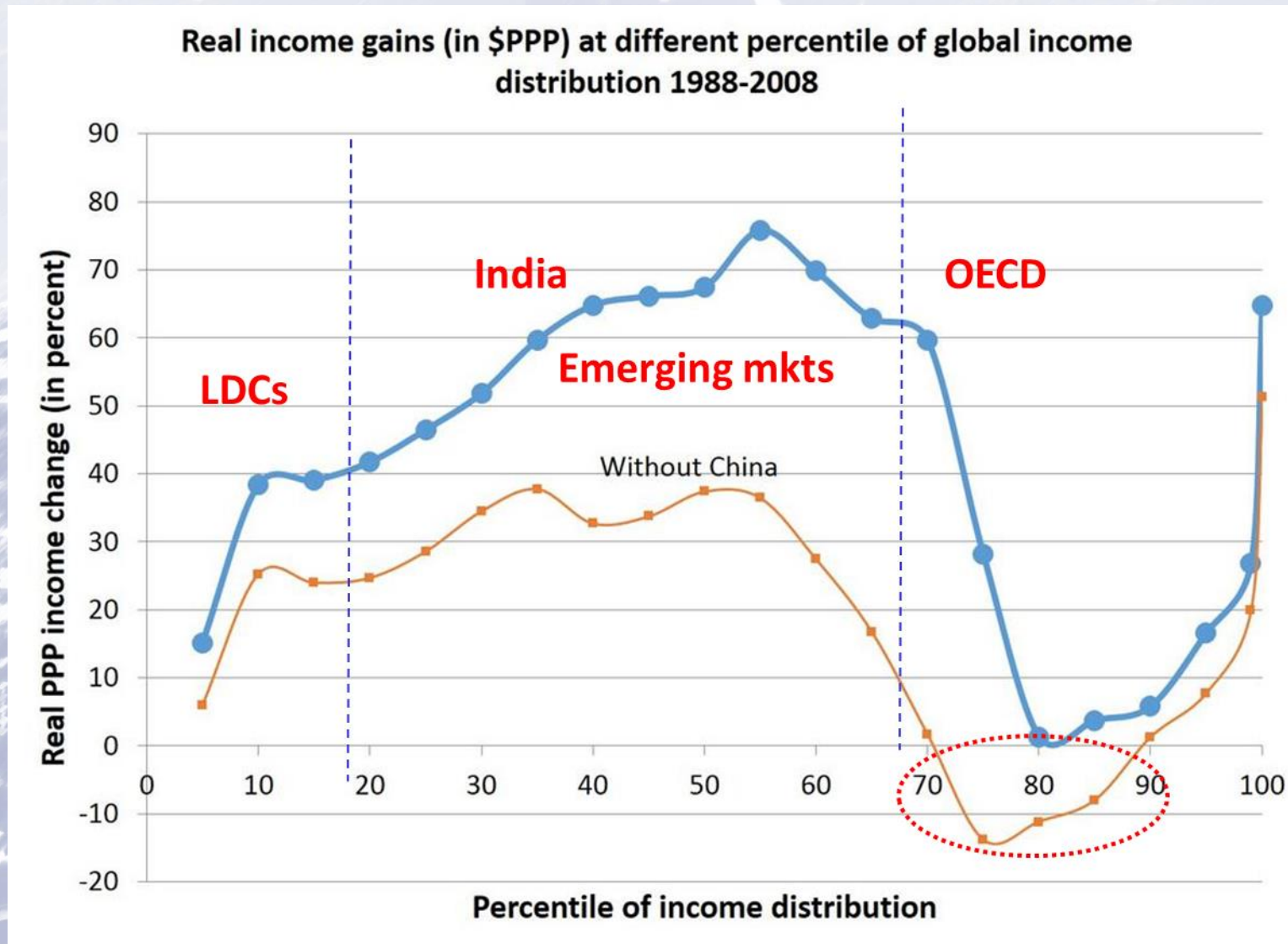
■ Margine intensivo: EWE



Margin intensivo: social unrest



Margine intensivo: social unrest



Source: Adapted from Milanovic (2012). Data updated to 2015 show similar trends.

Margine intensivo: social unrest

