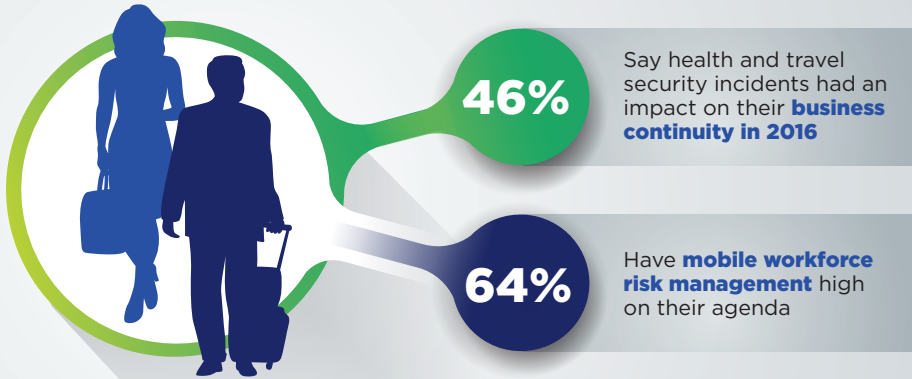


2017 BUSINESS IMPACT OF TRAVEL RISKS SURVEY

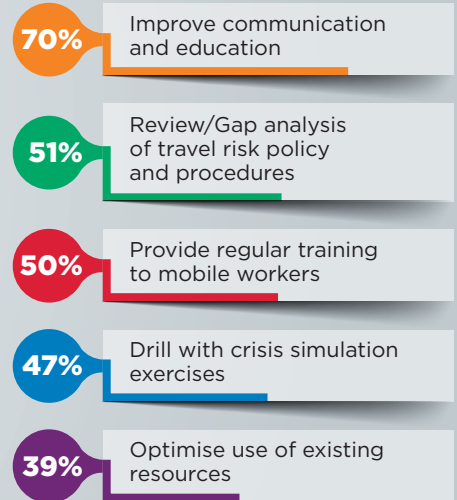
Europe: Your View



THE CHALLENGES OF PROTECTING PEOPLE



SEEN AS THE MOST IMPORTANT PREVENTIVE MEASURES TO PUT IN PLACE IN 2017



TOP 5 CHALLENGES IN MITIGATING TRAVEL RISKS DURING RECENT CRISIS OF 2016



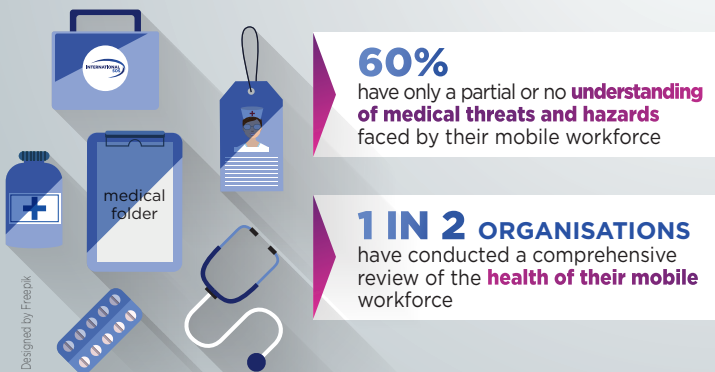
*“It is essential for organisations to move from theory to practice in mitigating the risks. **Testing both plans and procedures** are a critical success factor of travel risk management to ensure the continuity of the business.”*

Xavier Carn

Regional Security Director at International SOS and Control Risks

FROM HEALTHCARE MANAGEMENT TO WELLNESS MANAGEMENT

A LACK OF HOLISTIC VIEW OF TRAVEL RISKS



WELLBEING UNDERESTIMATED

66% understand well the link between wellbeing, absenteeism and productivity | **BUT** | **Only 39%** have a programme that is designed to support wellbeing

HEALTH DATA

67% of organisations clearly understand the **regulatory requirement** to help protect employees' health data

EMERGENCIES

3 IN 4 ORGANISATIONS have clear **plans and procedures for health emergencies**

“The most vital asset of an organisation is people. Knowing how well the workforce is and having systems in place to manage health issues, including wellness, is likely to become increasingly important in the future and translates into better business outcomes.”

Mark Parrish

Regional Medical Director at International SOS