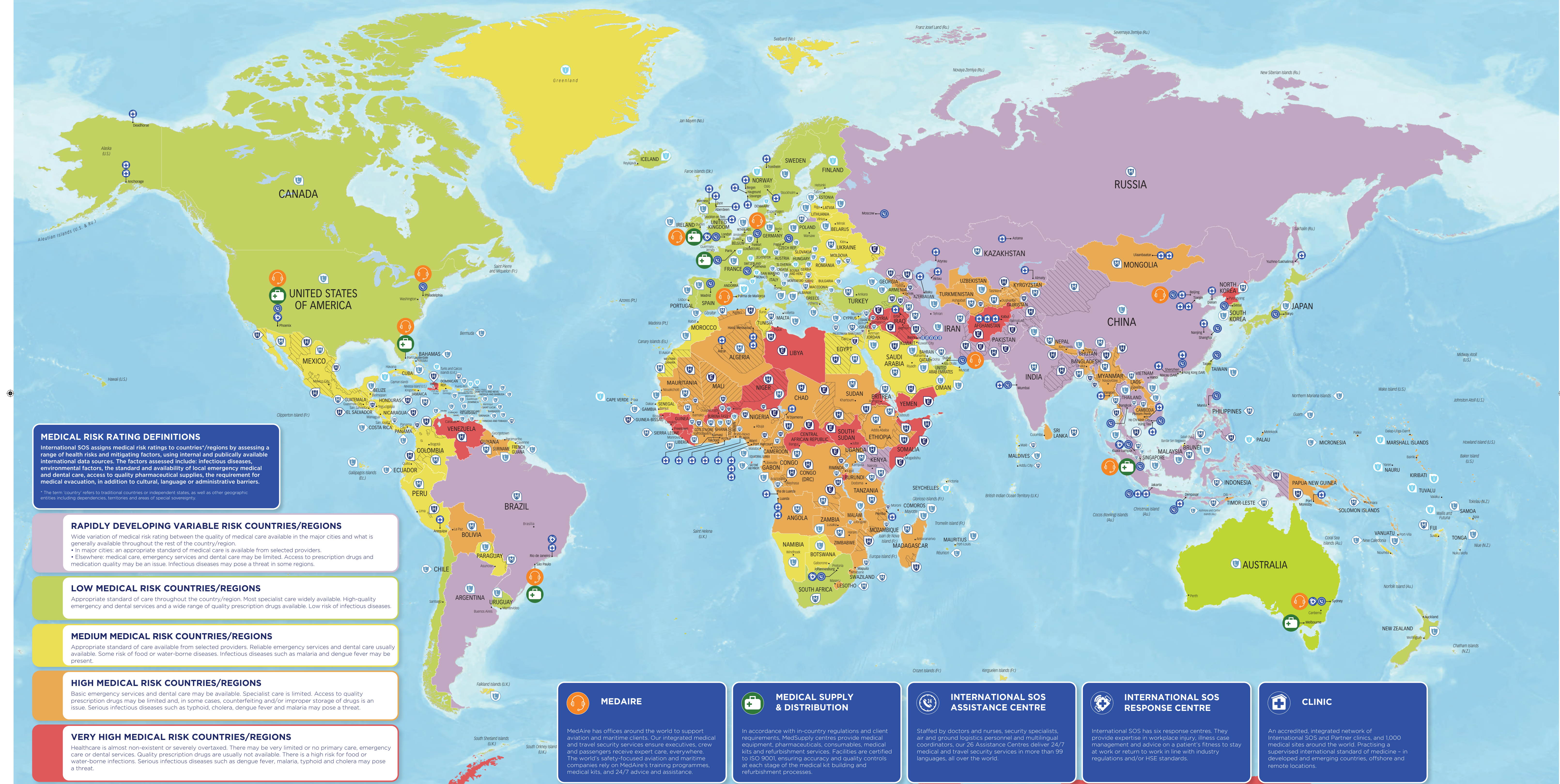


# TRAVEL RISK MAP 2019

Global health and travel security risks review



**MedAire**  
An International SOS Company



**MEDICAL RISK RATING DEFINITIONS**  
International SOS assigns medical risk ratings to countries/regions by assessing a range of health risks and mitigating factors, using internal and publically available international data sources. The factors assessed include: infectious diseases, environmental factors, the standard and availability of local emergency medical and dental care, access to quality pharmaceutical supplies, the requirement for medical evacuation, in addition to cultural, language or administrative barriers.  
\* The term 'country' refers to traditional countries or independent states, as well as other geographic entities including dependencies, territories and areas of special sovereignty.

**RAPIDLY DEVELOPING VARIABLE RISK COUNTRIES/REGIONS**  
Wide variation of medical risk rating between the quality of medical care available in the major cities and what is generally available throughout the rest of the country/region.  
• In major cities: an appropriate standard of medical care is available from selected providers.  
• Elsewhere: medical care, emergency services and dental care may be limited. Access to prescription drugs and medication quality may be an issue. Infectious diseases may pose a threat in some regions.

**LOW MEDICAL RISK COUNTRIES/REGIONS**  
Appropriate standard of care throughout the country/region. Most specialist care widely available. High-quality emergency and dental services and a wide range of quality prescription drugs available. Low risk of infectious diseases.

**MEDIUM MEDICAL RISK COUNTRIES/REGIONS**  
Appropriate standard of care available from selected providers. Reliable emergency services and dental care usually available. Some risk of food or water-borne diseases. Infectious diseases such as malaria and dengue fever may be present.

**HIGH MEDICAL RISK COUNTRIES/REGIONS**  
Basic emergency services and dental care may be available. Specialist care is limited. Access to quality prescription drugs may be limited and, in some cases, counterfeiting and/or improper storage of drugs is an issue. Serious infectious diseases such as typhoid, cholera, dengue fever and malaria may pose a threat.

**VERY HIGH MEDICAL RISK COUNTRIES/REGIONS**  
Healthcare is almost non-existent or severely overtaxed. There may be very limited or no primary care, emergency care or dental services. Quality prescription drugs are usually not available. There is a high risk for food or water-borne infections. Serious infectious diseases such as dengue fever, malaria, typhoid and cholera may pose a threat.

**TRAVEL SECURITY RISK RATING DEFINITIONS**  
The travel security risk rating evaluates the threat posed to travellers and international assignees by political violence (including terrorism, insurgency, politically motivated unrest and war), social unrest (including sectarian, communal and ethnic violence) as well as violent and petty crime. Other factors, such as the robustness of the transport infrastructure, the state of industrial relations, the effectiveness of the security and emergency services and the country's susceptibility to natural disasters are also considered where they are of sufficient magnitude to impact the overall risk environment for travellers.

**INSIGNIFICANT TRAVEL RISK**  
Rates of violent crime are very low. There is no significant political violence or civil unrest and little sectarian, communal, racial or targeted violence against foreigners. Security and emergency services are effective and infrastructure is sound. Transport services are of a high standard with good safety records and only occasional travel disruption. Industrial action affecting essential services is rare.

**LOW TRAVEL RISK**  
Violent crime rates are low and racial, sectarian or political violence or civil unrest is uncommon. If terrorism is a threat, groups have limited operational capabilities, and acts of terrorism are rare. Security and emergency services are effective and infrastructure is sound. Industrial action and transport disruption are infrequent.

**MEDIUM TRAVEL RISK**  
Periodic political unrest, violent protests, insurgency and/or sporadic acts of terrorism occur. Travellers and international assignees may face risk from communal, sectarian or racial violence and violent crime. Capacity of security and emergency services and infrastructure varies. Industrial action can disrupt travel.

**HIGH TRAVEL RISK**  
Protests are frequently violent and may target or disrupt foreigners; they may be exacerbated by governance issues, including security or law and order capacity. Violent crime and terrorism pose significant direct or incidental risks to travellers and international assignees. Communal, sectarian or racial violence is common and foreigners may be directly targeted. Certain parts of the country are inaccessible or off-limits to the traveller.

**EXTREME TRAVEL RISK**  
Government control and law and order may be minimal or non-existent across large areas. Serious threat of violent attacks by armed groups targeting travellers and international assignees. Government and transport services are barely functional. Large parts of the country are inaccessible to foreigners.

**REGIONAL VARIATIONS**  
Travel Security Risk Zones are areas within a country where the risks faced by travellers and international assignees are different from the country's overall risk environment, usually necessitating a different level of preparation.

**MEDAIRE**  
MedAire has offices around the world to support aviation and maritime clients. Our integrated medical and travel security services ensure executives, crew and passengers receive expert care, everywhere. The world's safety-focused aviation and maritime companies rely on MedAire's training programmes, medical kits, and 24/7 advice and assistance.

**MEDICAL SUPPLY & DISTRIBUTION**  
In accordance with in-country regulations and client requirements, MedSupply centres deliver 24/7 medical and travel security services. Facilities are certified to ISO 9001, ensuring accuracy and quality controls at each stage of the medical kit building and refurbishment processes.

**INTERNATIONAL SOS ASSISTANCE CENTRE**  
Staffed by doctors and nurses, security specialists, air and ground logistics personnel and multilingual coordinators, our 26 Assistance Centres deliver 24/7 medical and travel security services in more than 99 languages, all over the world.

**INTERNATIONAL SOS RESPONSE CENTRE**  
International SOS has six response centres. They provide expertise in workplace injury, illness case management and advice on a patient's fitness to stay at work or return to work in line with industry regulations and/or HSE standards.

**CLINIC**  
An accredited, integrated network of International SOS and Partner clinics, and 1,000 medical sites around the world. Practising a supervised international standard of medicine - in developed and emerging countries, offshore and remote locations.

The Travel Risk Map is a global representation of medical and travel security risks. Please consult MedAire for more detailed information on country-specific risks. All risk ratings shown are taken from November 2018.  
[www.medaire.com](http://www.medaire.com)

**Control Risks**