



INTERNATIONAL  
SOS

# EMPOWERING SUSTAINABILITY AND RESILIENCE IN MINING

A PREVENTATIVE APPROACH TO YOUR HEALTH AND  
SECURITY MANAGEMENT.



WORLDWIDE REACH.  
HUMAN TOUCH.

[internationalsos.com](http://internationalsos.com)

# SUSTAINABILITY: WE PARTNER TO PROTECT YOUR PEOPLE AND OPERATIONS

At International SOS, we help organisations develop, grow and protect human capital at work and in life, for now and the future.



## WE SUPPORT GLOBAL REPORTING

Our data from assistance, medical, and other programmes can add value to your health and risk management-related reporting disclosures (e.g. Global Reporting Initiative (GRI)).



## WE HELP YOUR ORGANISATION SHOWCASE YOUR DUTY OF CARE

By partnering with us, you can fulfil your Duty of Care responsibilities, while empowering business resilience, continuity and sustainability.

Our experts can advise on medical and risk mitigation solutions that are relevant to the core business of organisations to meet sustainability disclosure requirements, while bringing a return on investment to your organisation.



## WE HELP ORGANISATIONS MEET THEIR SUSTAINABILITY PRIORITIES

Medical staffing, workplace prevention programmes, and travellers' digital support are key elements contributing to a comprehensive sustainability framework.

We help you:

- Achieve your sustainability goals by implementing appropriate response and risk mitigation solutions.
- Innovate in your reporting requirements by providing added value insights.
- Enhance your sustainability planning with our health and security experts by offering strategic advice.



## WE CARE

International SOS aims to help you deliver on your sustainability commitments to your people, partners, and community.

International SOS is in the business of saving lives and protecting your global workforce from health and security risks. Our integrated medical and security risk mitigation solutions have been supporting organisations achieving and reporting on SDG achievements.



SUSTAINABLE DEVELOPMENT GOALS



*Good health and wellbeing and decent work are the SDGs we focus on.*

## SECURITY CONSULTING: STAYING PREPARED

Security planning solutions are delivered from each region by our local travel security experts, assisting onsite works and travellers.



### ESCALATION MANAGEMENT PLAN

Comprehensive policy framework and guidelines to enable management decision-making during a crisis situation.



### SIMULATION EXERCISE

Test management decision-making through a scenario-based workshop.



### LOCAL EVACUATION PLAN

Details the actions and movements required to safely evacuate members on the ground.



### PLAN UPDATE

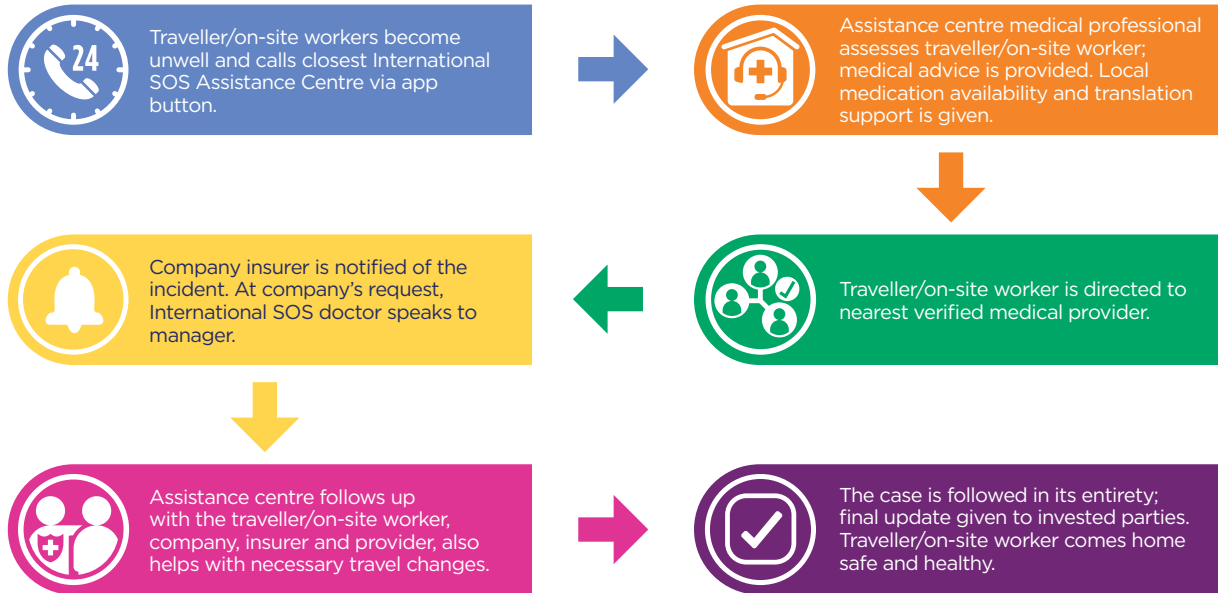
Update your plans to account for changes in the security environment.



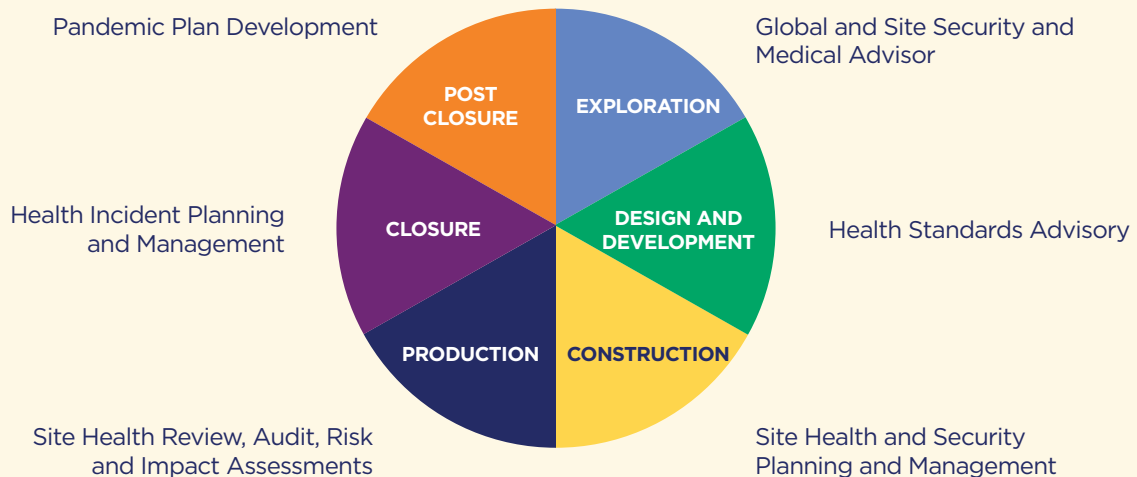
### ESCALATION MATRIX

Detailed, tailored, location-specific decision-making tool that helps you identify when the security situation is deteriorating.

## CASE MANAGEMENT PROCESS



## CONSULTING SERVICES



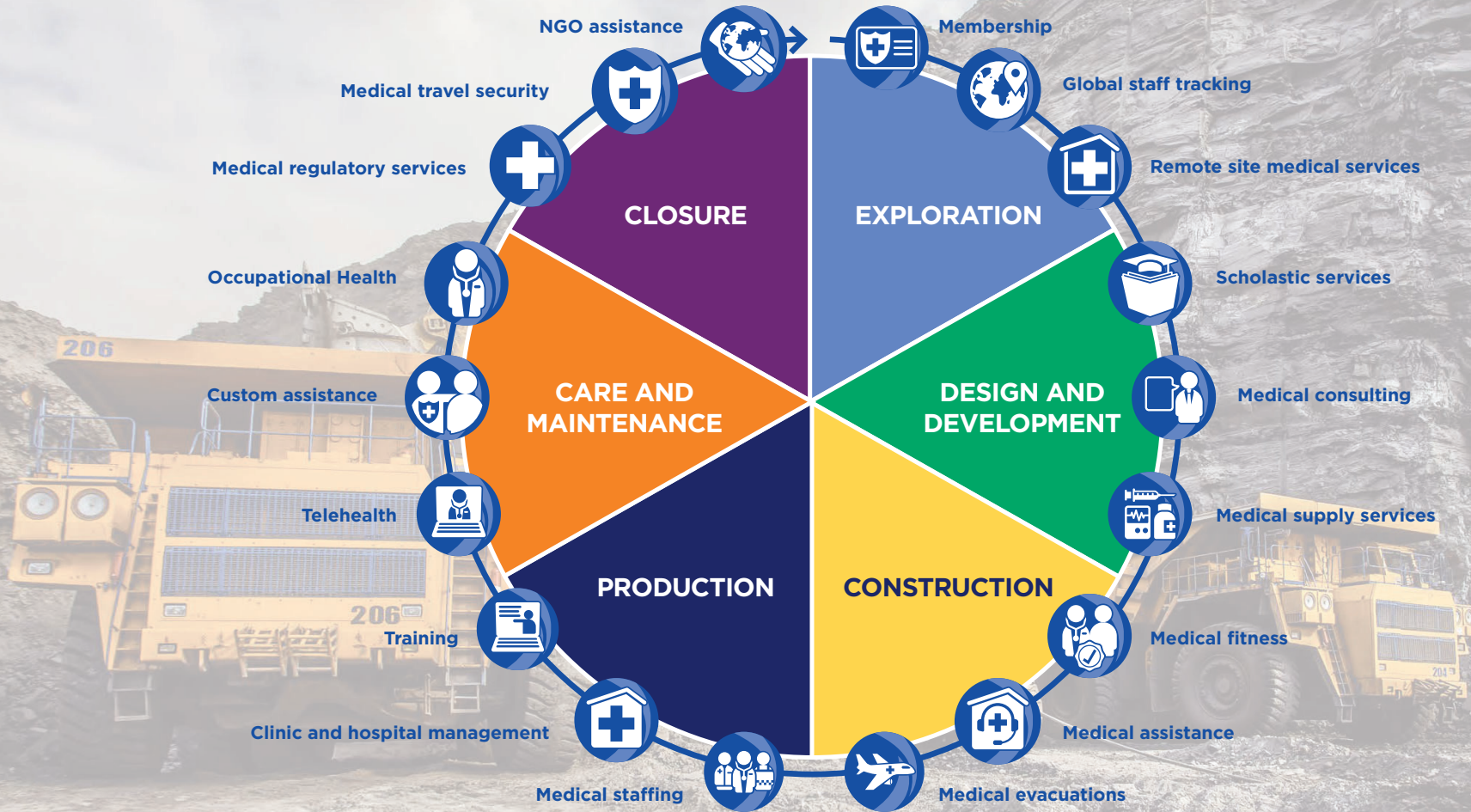
## MALARIA VECTOR CONTROL PROGRAMME

We follow an integrated approach for malaria prevention, control, diagnosis and treatment.



# MINING LIFE CYCLE

We take a preventive approach to health management on your site that will reduce costs, recordable injuries and time spent off site. We maximise gains by integrating our onsite medical services, assistance services and telemedicine support with your business objectives.



**International standard** of medical care



Family medical needs are dealt with as a matter of routine, with **24/7 on-call capabilities** to manage medical emergencies



**Occupational Health** programmes to help companies with the healthcare and fitness-to-work management of their workforce



Access to a wide range of **specialist services**



International-standard **medical supplies** on-site at every primary care clinic



Capability of stabilising patients **prior to evacuation**



Seamless integration with our **24/7 Assistance Centres** for information and advice



**International best practice standards** and quality management process, with regular internal and external audits



**Referral management**

**SAVE COSTS • PREVENT WORKPLACE INJURIES • REDUCE RECORDABLES • FLEXIBLE SOLUTIONS • REPORTING**

## MINE SUSTAINABILITY

Prevent avoidable issues through preparation and information



## MINE MANAGEMENT

We help you assess destination risks prior to travelling to make informed decisions



## PRODUCTION AND OPERATIONS

We notify you when things change in your location that might cause a disruption and provide you with advice on what to do

