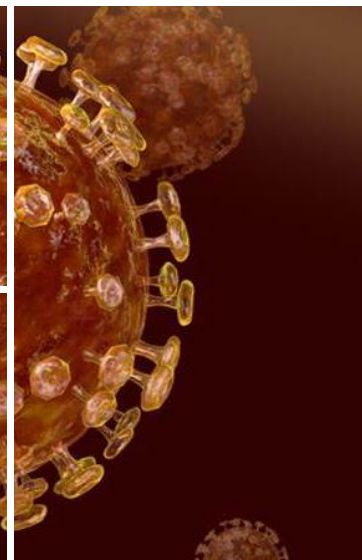
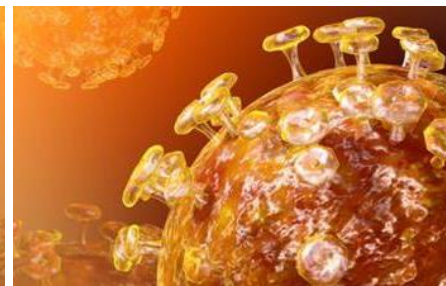
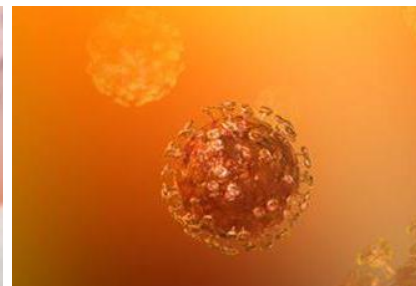




CORONAVIRUS (COVID-19): EUROPE SITUATION UPDATE

LIVE WEBINAR

Monday 16th March | 2.00PM UK / 3.00PM CET



AGENDA

- Update on COVID-19 with particular regard to the situation in Europe
- How can International SOS help?
 - ✓ Demonstration of **Enterprise Health Security Center** platform including:
 - ✓ Incident / site monitoring
 - ✓ Pandemic playbooks and toolkits
 - ✓ Access to trusted medical and security information
 - ✓ Medical consultancy – emotional support and teleconsultation
- Q&A

SPEAKERS



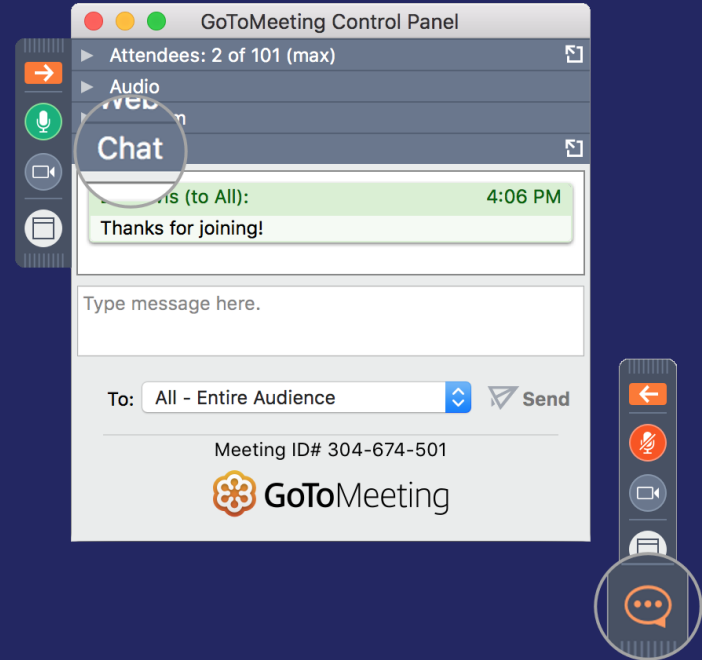
DR PHILIPPE GUIBERT
Regional Medical Director
International SOS



LAURA DAUVERGNE
Digital Travel Risk
Mitigation Specialist
International SOS

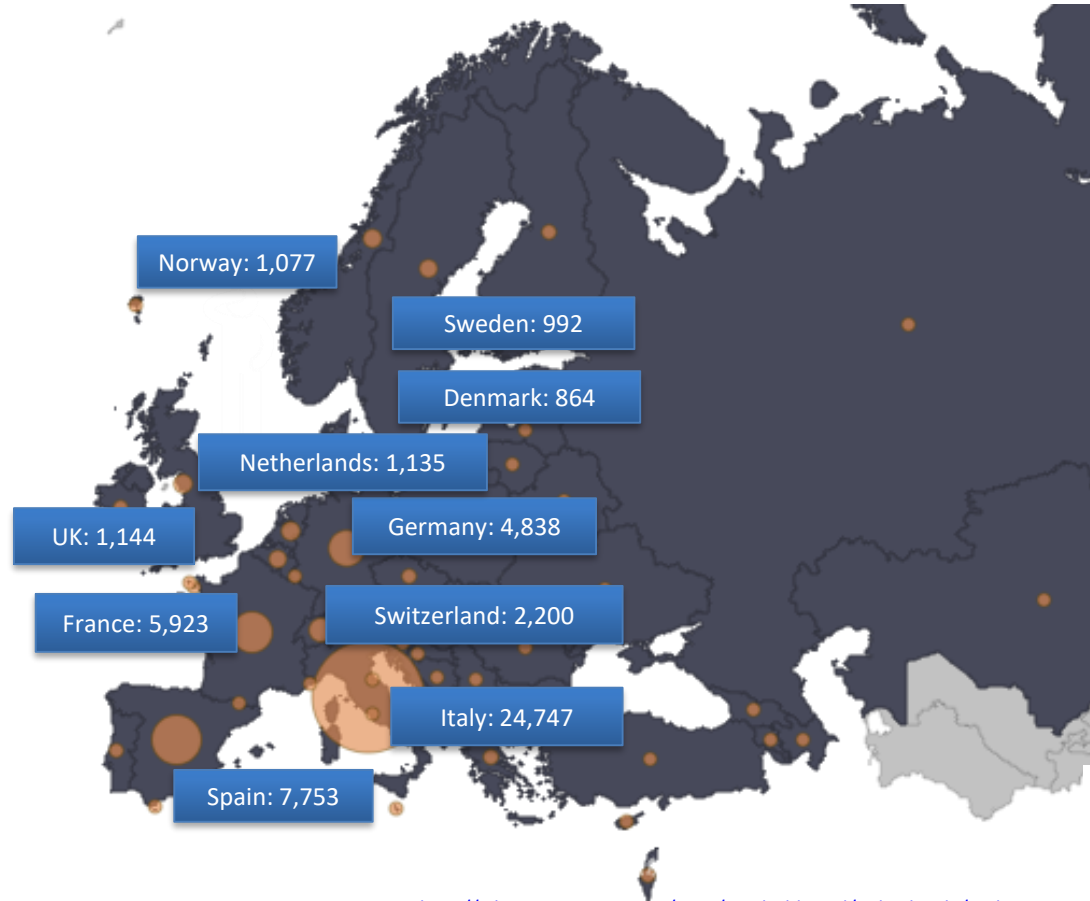
INSTRUCTIONS

- All participants are in “listen only” mode
- Please submit your questions via the ‘chat box’ on the right hand side of the control panel



WHAT'S HAPPENING IN EUROPE?

Visit [our website](#) for ongoing updates on flight operations, travel restrictions and screen procedures in various locations across the world.

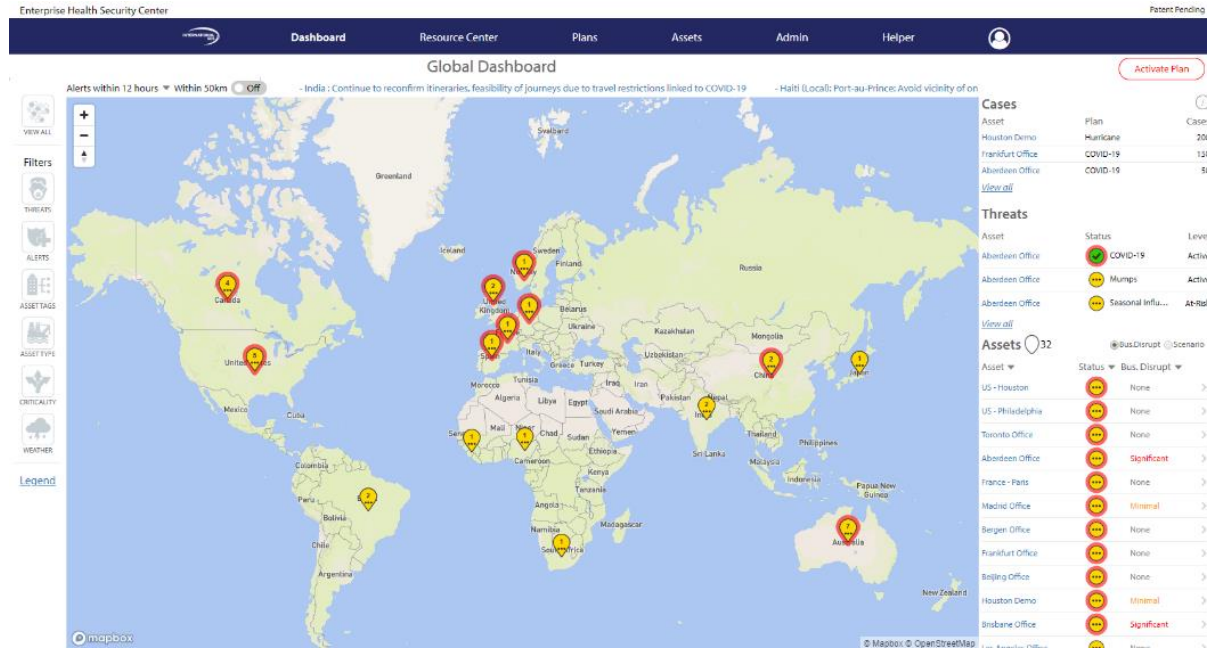


WHAT DOES 'PANDEMIC' MEAN?

- Declaring a pandemic has nothing to do with changes to the characteristics of a disease, but is instead associated with concerns over its geographic spread.
- The **World Health Organization** has stressed that using the word “pandemic” does not signal a change in its advice.
- The use of this term however highlights the importance of countries throughout the world working cooperatively and openly with one another and coming together as a united front in efforts to bring the COVID-19 situation under control.

Practical tools to support

MONITOR. RESPOND. REPORT



What else should you consider?

PSYCHOLOGICAL IMPACTS

Ensure mental health is part of your response plan



- Stress and anxiety
- Fake news
- Loneliness relating to quarantine measures
- Isolation due to social distancing measures
- Becoming trapped in a foreign location due to lockdown measures
- Health-related stigma / discrimination

Read our [10 tips blog](#) “Looking after yourself during the Coronavirus outbreak: Psychological advice for employees.”

VIRTUAL ACCESS TO CARE

Access to telehealth or teleconsultation can help with managing this challenge



- Maximise productivity
- Reduce medical costs
- Enable business continuity
- Deliver on your duty of care obligations
- Minimise travel health risks
- Provide a global health care solution for your travelling workforce

[Learn more](#) about how we are supporting clients via virtual access to care

WHAT ACTIONS SHOULD BE TAKEN BY ORGANISATIONS?

Information & Communication

- FAQ
- Education
- International SOS portal
- Executive briefings

Key elements & facts

Management of Travellers & Expatriates

- Evacuation
- Tracking
- Re-direction
- Mental health support
- Masks

Safeguard those who are exposed

Case Management Onsite

- Suspected cases
- Screening
- Work from home
- Cleaning
- Masks
- Return to work processes

Deal with cases

Q&A NOW OPEN



The screenshot shows the International SOS website. At the top, there is a navigation bar with the phone number +1 215 942 8226, a search icon, and a Member Log In link. Below this is a main menu with links for Solutions, News & Events, Members, Personal Travel, and Contact. The main content area features a video player for a webinar recording titled 'CORONAVIRUS DISEASE (COVID-19) OUTBREAK'. The video shows two speakers, with a caption for Michael Hancock, Group Deputy Director of Operations, International SOS. To the right of the video is a registration form titled 'COMPLETE THE FORM TO BE CONTACTED ABOUT OUR PANDEMIC PLANNING AND INFECTIOUS DISEASE RESPONSE SERVICES FOR YOUR ORGANISATION'. The form includes fields for First Name, Last Name, Job Title, and Company Email Address, each with an asterisk indicating it is a required field.

THANK YOU FOR ATTENDING

The webinar recording and materials will be emailed to you shortly.

PLEASE COMPLETE OUR BRIEF FEEDBACK SURVEY AT THE CLOSURE OF THIS SESSION

For any further enquiries, please contact:
communications.europe@internationalsos.com

[HTTPS://WWW.INTERNATIONALSOS.COM/CORONAVIRUS](https://www.internationalsos.com/coronavirus)